



SPÓRT ÉIREANN
SPORT IRELAND



**National Digital Database
of
Sport & Recreation
Amenities**

Session Agenda

➤ Local Authorities Update 14th December 2022

1. **Project Overview** - Darragh O'Sullivan, Sport Ireland
2. **Website Demo** – Katie McFarland, ESRI Ireland
3. **App & Stakeholder Tools Demo** – John Hewitt, ESRI Ireland
4. **Data Collection** – Fionntán O'Donnell, Derilinx
5. **Q&A** - Everyone

Project Aims / Overview

1. Collect **Authoritative Data** on Sport & Recreation Amenities
2. Serve Information to the **Public**
3. Provide **Benefit to Data Providers**
4. Facilitate **National & Local Policies**

- Collaborative Approach
- Feasibility Study 2019
- Pilot Phase 2020
- Roll Out to Mid 2023



National Policies Facilitated

- Project Ireland 2040
- National Development Plan 2018-2027
- Healthy Ireland Framework 2013-2025
- National Physical Activity Plan
- National Sports Policy 2018 – 2027
- Sport Ireland's Policy on Sport & Physical Activity in the Outdoors
- Public Service Data Strategy 2019-2023
- EU Open Data Directive July 2021
- And more...



Impact / Benefits

1. Improve Lives of People in Ireland

- Higher levels of physical activity
- Improved health & wellbeing
- Suitable facilities where they are needed

2. Transform Planning, Funding & Management of Amenities

- Improved analysis of requirements, future needs & impacts
- Consistent, accurate data for evidence-based decisions
- Effective collaboration between stakeholders

Data Included

1. Sports & Recreation

- Clubs/Groups/Teams
- Pitches, Courses
- Gyms, Pools etc

2. Public Places

- Parks, Playgrounds
- Beaches, Forests
- Surf/Swim Spots etc

3. Trails

- Walking/Cycling
- Paddling/Horse...
- Greenways/Blueways

4. Amenities

- Parking, Accessibility
- Toilets, Changing
- Bike Hire etc

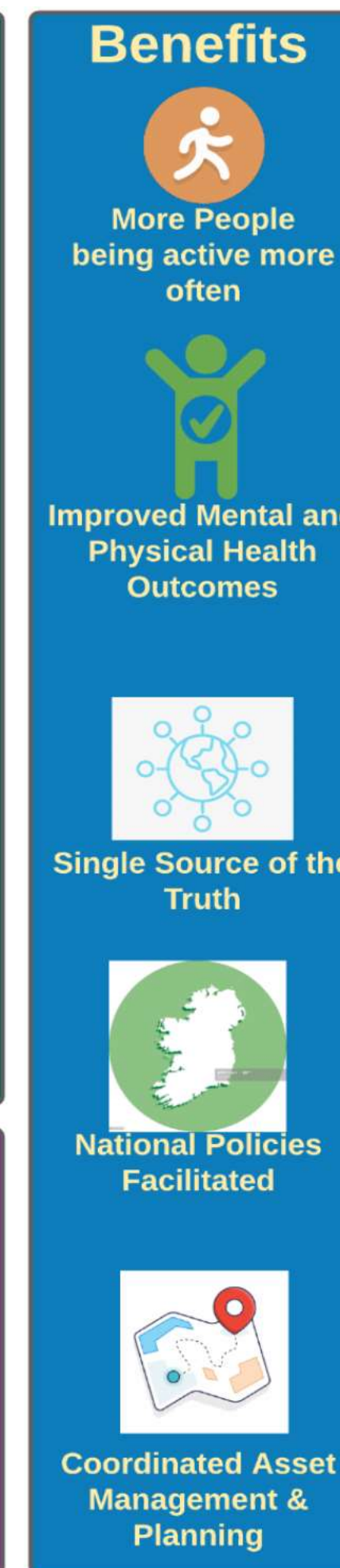
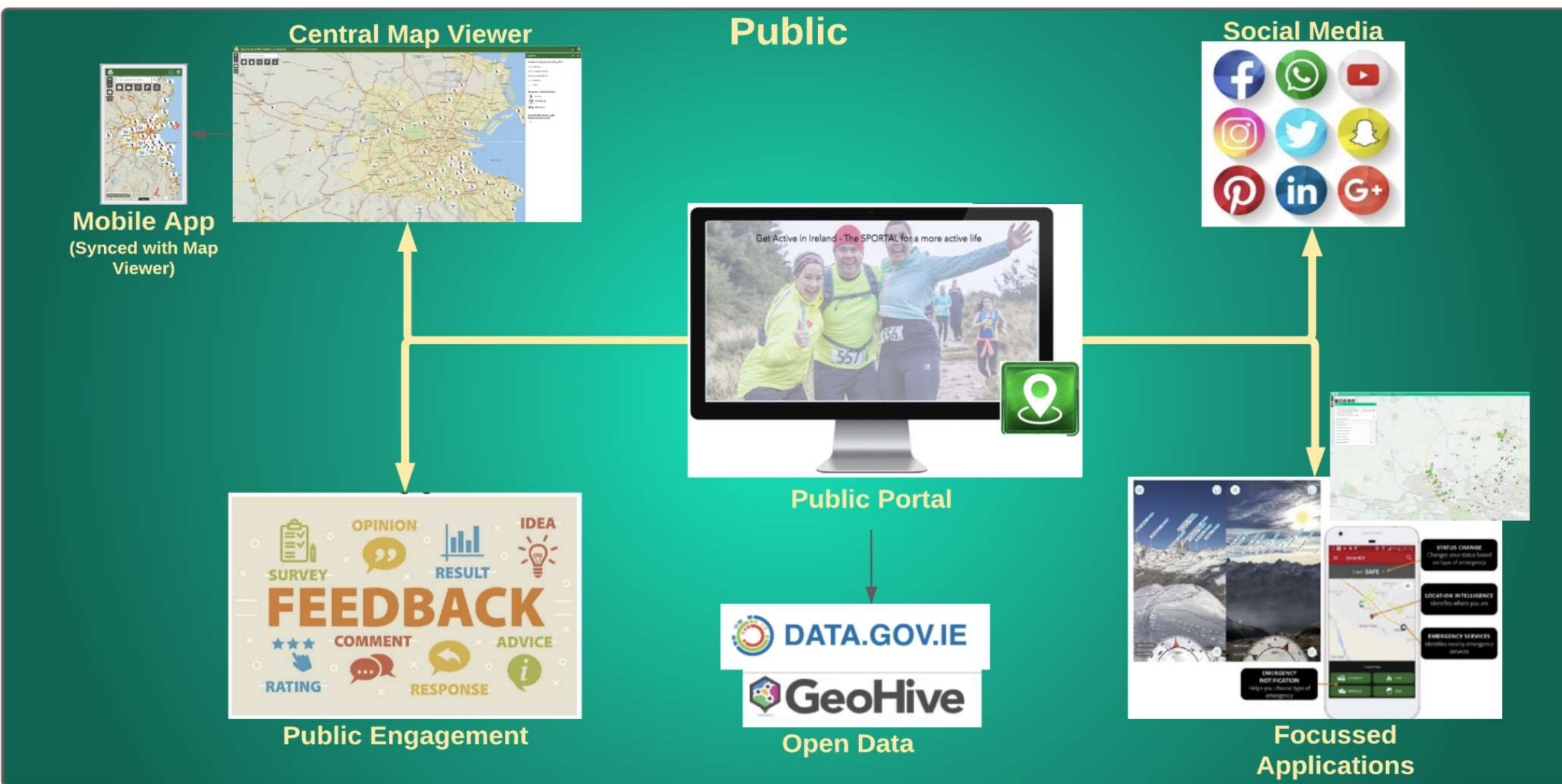
Data Providers

- Sport Ireland
- Local Authorities
- Sport NGBs
- State Bodies
- Government Departments
- Local Sports Partnerships

- *Local Authorities manage assets across all datasets*
- *Priority is owned/managed facilities & public places*



System Structure

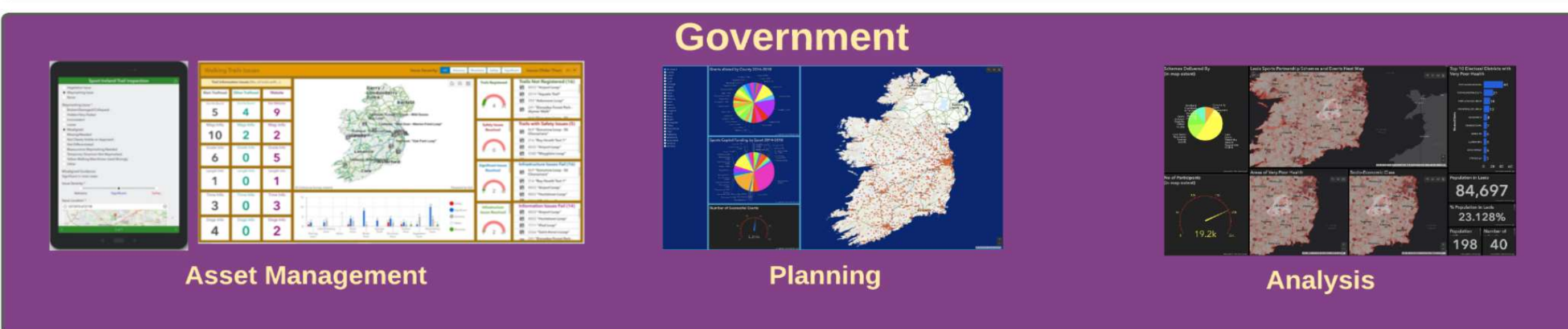


1. Public Portal

- Find Opportunities
- Engaging Interactive Hub
- Access to Open Data
- Website & Mobile App

2. Stakeholder Access

- Planning/Analysis
- Collaboration/Sharing
- Asset Management
- Further Use Cases/Benefits



Use Cases & Benefits

Public

- Public Physical Activity Levels
- Tourism
- Covid-19 / Opportunities Near Me
- Disability Access
- Social Prescribing
- Emergency Services



Stakeholders

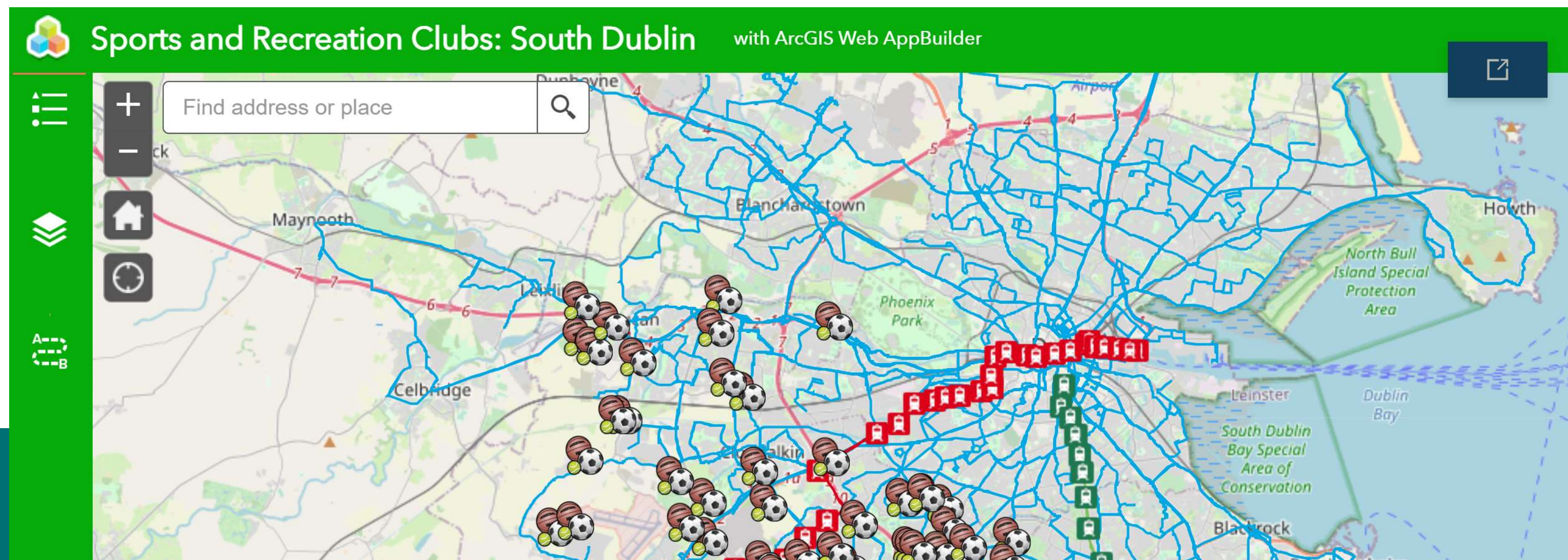
- Business Intelligence & Visualisation
- Gap & Needs Analysis
- Planning & Funding
- Asset Management & Issue Reporting
- Data Management & Requirements
- Collaboration among Stakeholders

Benefits/Uses for Local Authorities



1. Facilitate Data Requirements

1. Improved Data Quality & Data Management
2. Meet Open Data Requirements (EU Directive July 2021)
3. Access Additional Data from Other Stakeholders & Sources
4. Assistance from Project Team / Technical Partner



2. Planning, Analysis & Collaboration

1. Visualise Current Facilities - Dashboards / Statistics / Analytics
2. Layer with other Data (e.g. Census, Environment, Deprivation Index)
3. Needs / Gap Analysis
4. Strategic Planning
5. Regional / Cross-Border Projects
6. Collaboration with other Bodies
7. Facilitate Funding Applications (internal & external)



3. Asset Management

1. Recreational Assets in One Place
2. Provide Tools for Audits, Condition Surveys etc
3. Public Feedback on Condition / Issues

The screenshot displays the 'Trail Inspection Programme' dashboard. On the left, there are four summary cards: 'Assigned' with 4 items, 'Unassigned' with 0 items, 'In Progress' with 2 items, and 'Completed' with 7 items. The central map shows Ireland with various trails marked, including Belmullet Loop, Doyle Dash, Longford Loop, and Ballinaboola Loop. On the right, there are three panels: 'Assignment Types' (Walking Trail Registration, Walking Trail Audit, Walking Trail Assessment), 'Inspectors' (Darragh O'Sullivan, Doug Corrie, Áine Doyle, John McGroary, Maria Gibbons), and 'Assignments' (Aine Amble, Ballinaboola Loop, Belmullet Loop, Culleen East Walk, Doyle Dander, Doyle Dash, Gibbons Go, Hall Hop, Iveragh Loop).



4. Tourism & Publicity

1. Links from Portal to Local Websites
2. Data Available for use in Local Websites
3. Data Available to Fáilte Ireland
4. Targeted / Niche Websites & Apps



5. Local Communities

1. More Active Local Population
2. Data Available for Local / Niche Businesses / Economy
3. Strategic Local Uses & Benefits

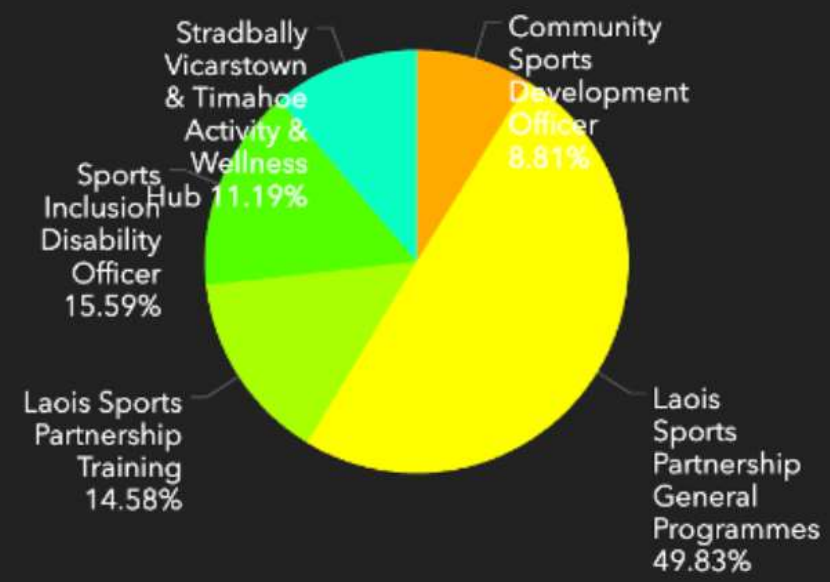


Example Use Cases from Pilot Phase



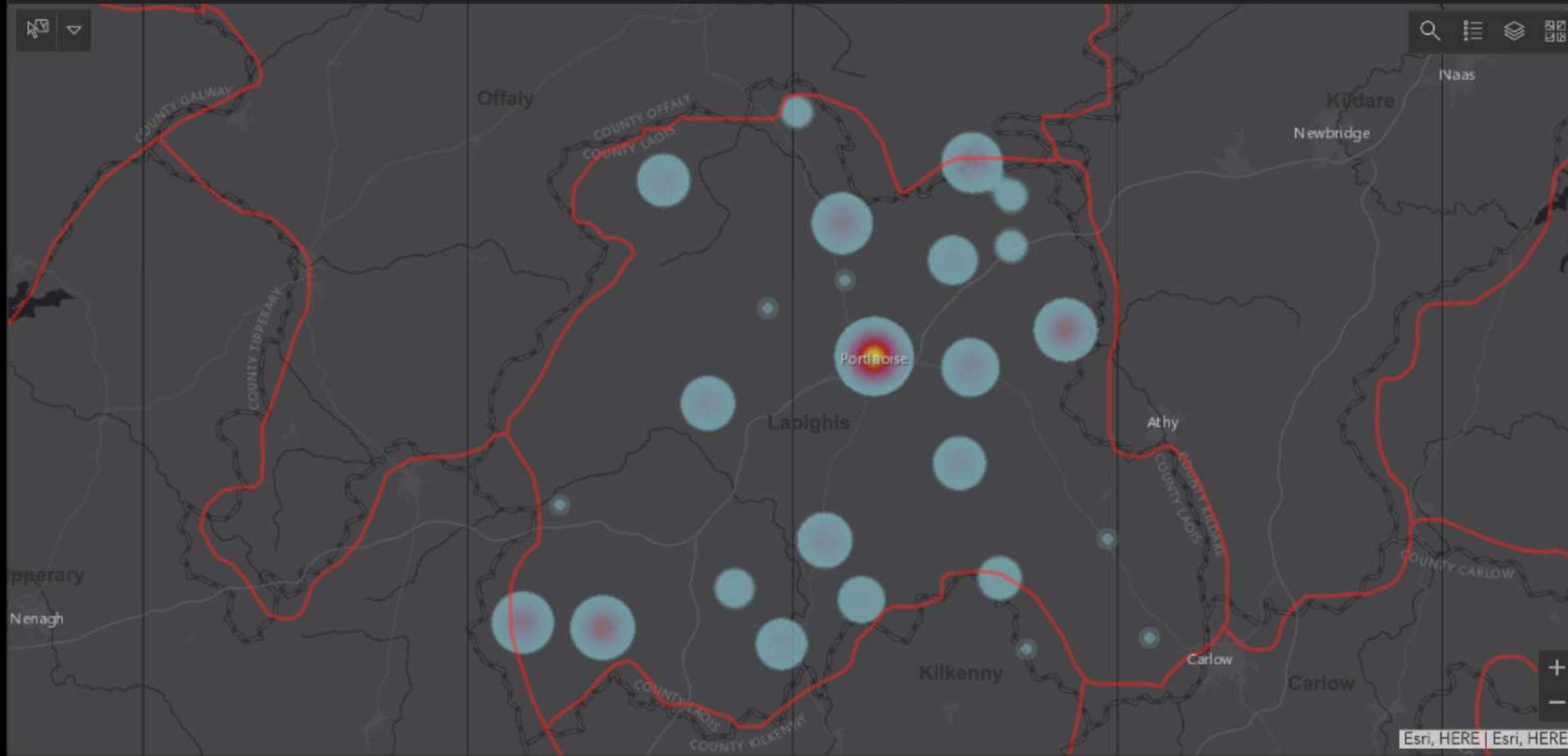
LSP Programme Impact Analysis

Schemes Delivered By (in map extent)

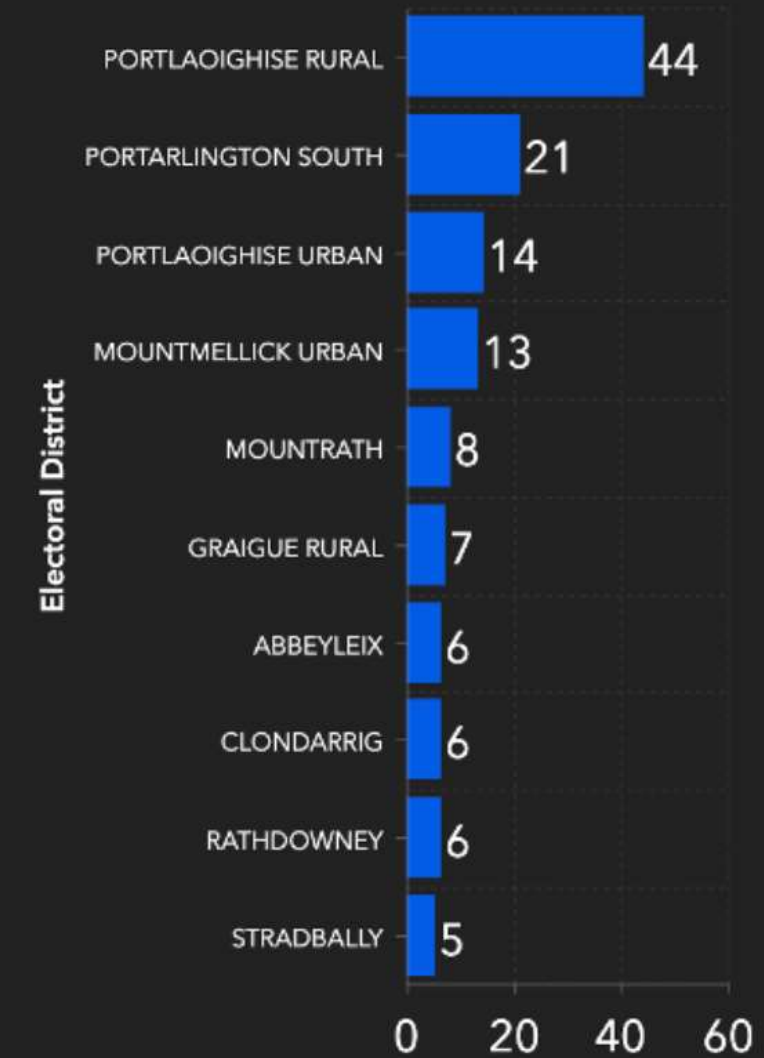


Last update: 4 minutes ago

Laois Sports Partnership Schemes and Events Heat Map



Top 10 Electoral Districts with Very Poor Health



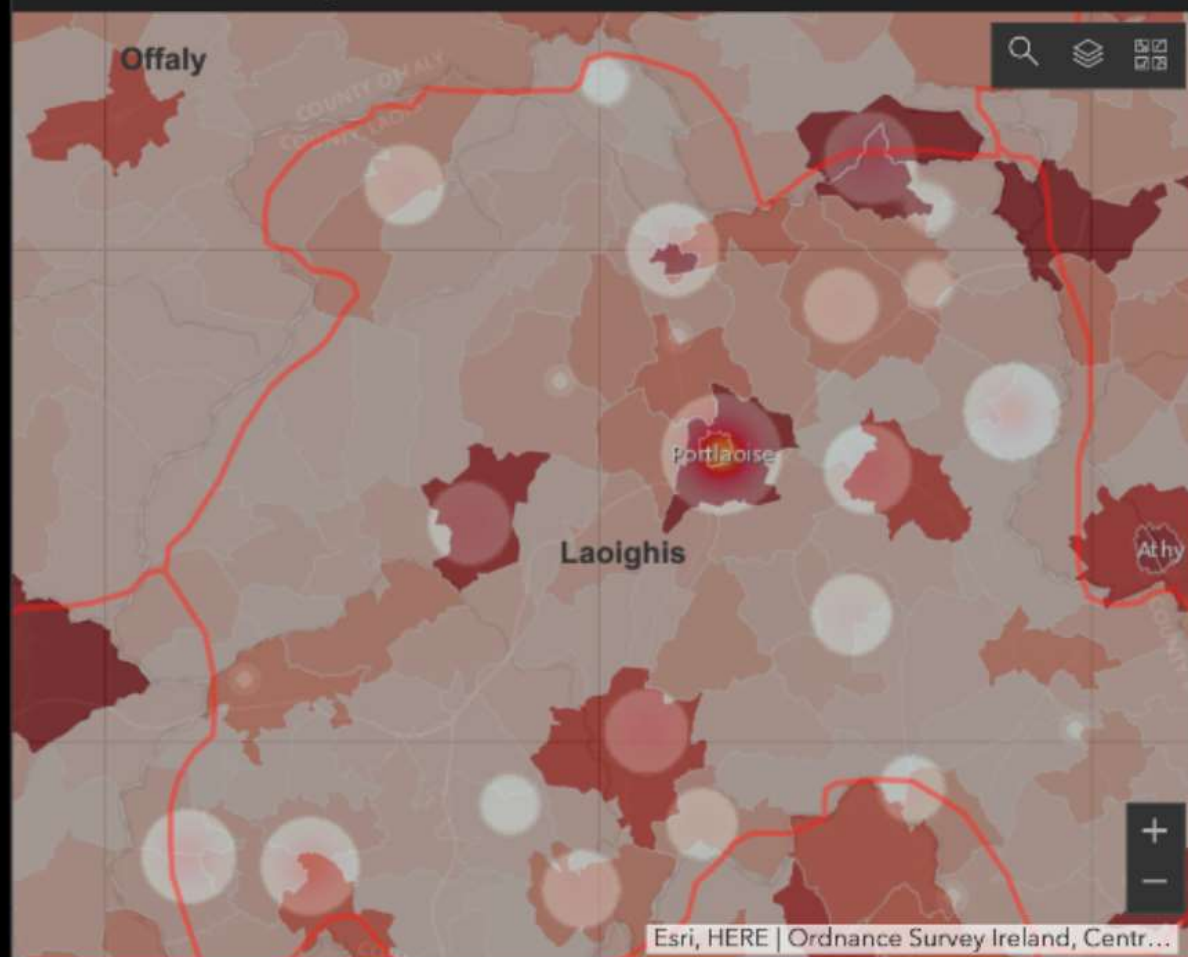
Last update: 36 minutes ago

No of Participants (in map extent)

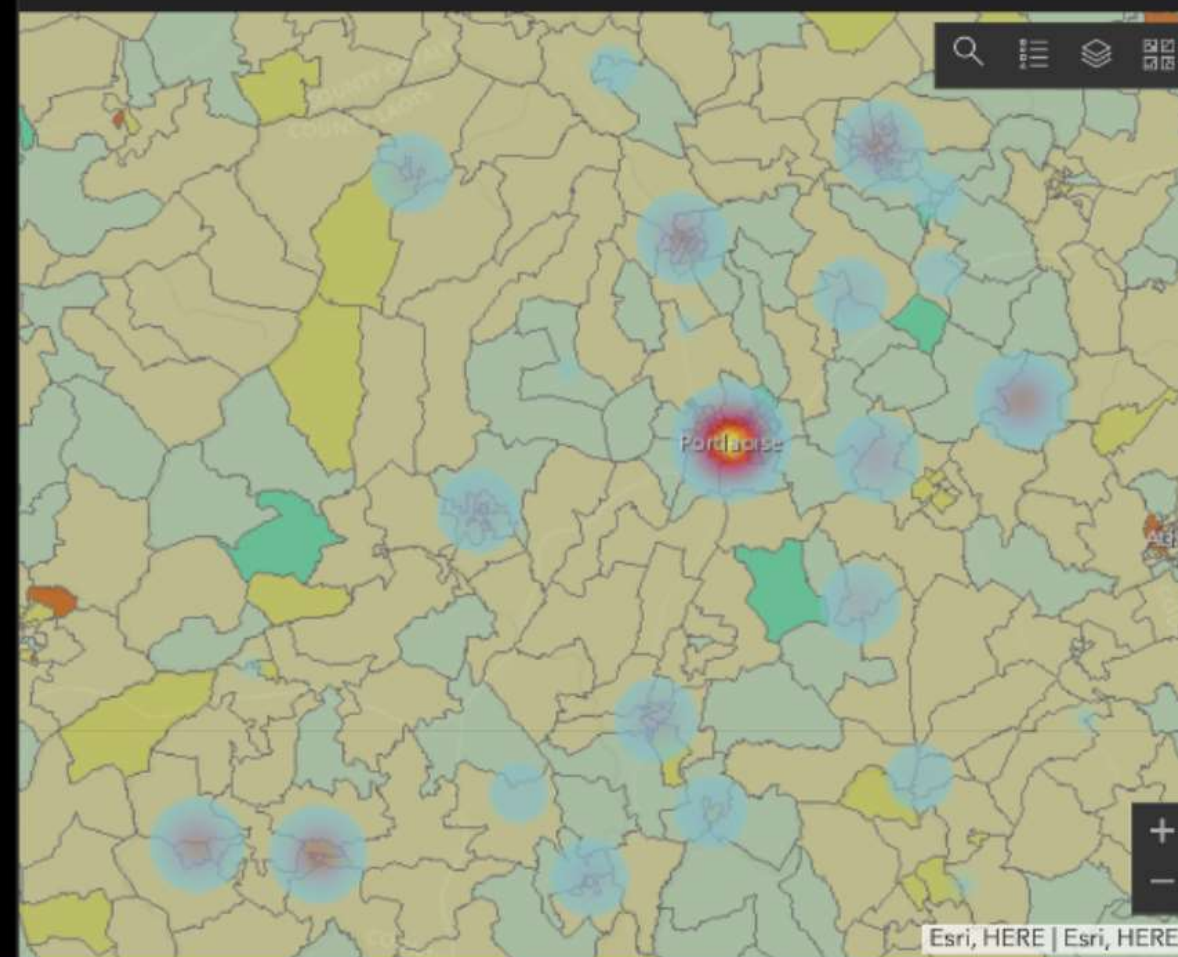


Last update: 4 minutes ago

Areas of Very Poor Health



Socio-Economic Class



Population in Laois

84,697

Last update: 36 minutes ago

% Population in Laois

23.128%

Last update: 36 minutes ago

Population

198

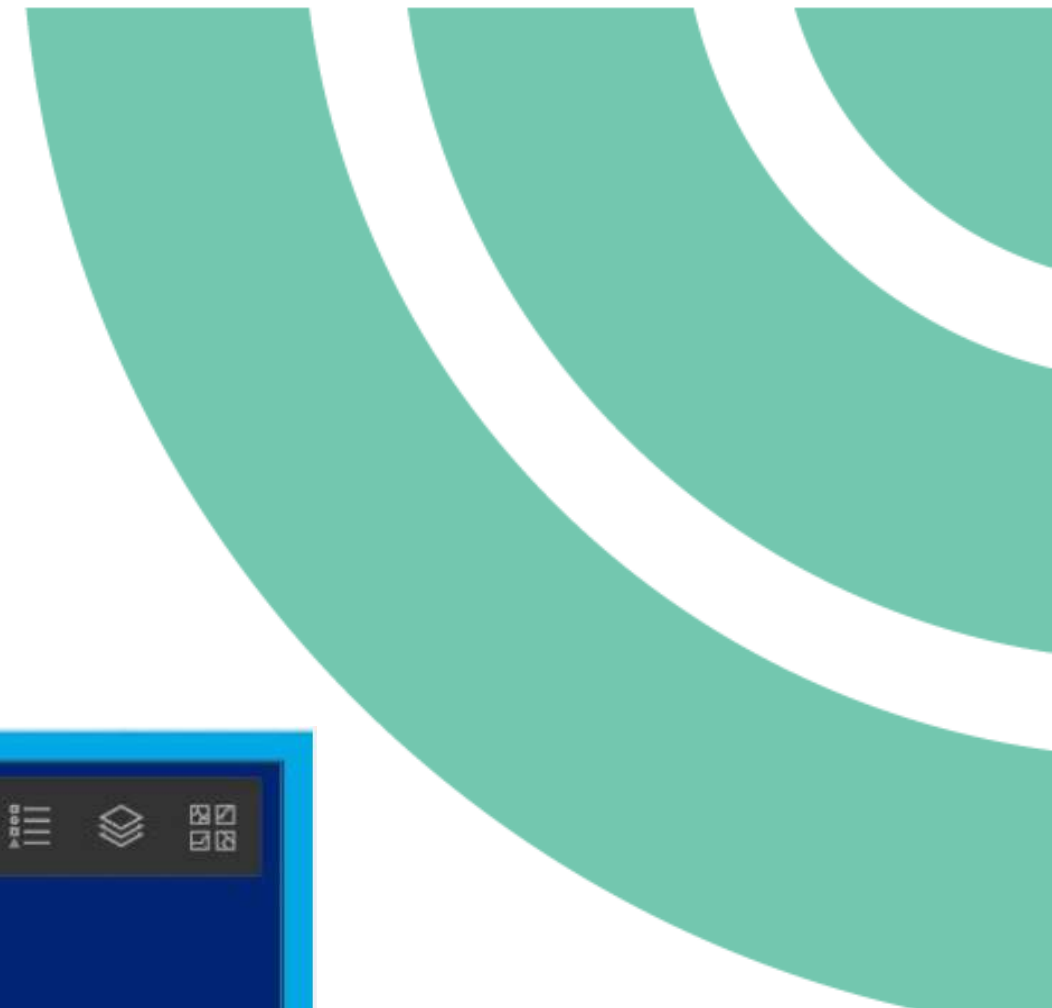
Last update: 36 minutes ago

Number of

40

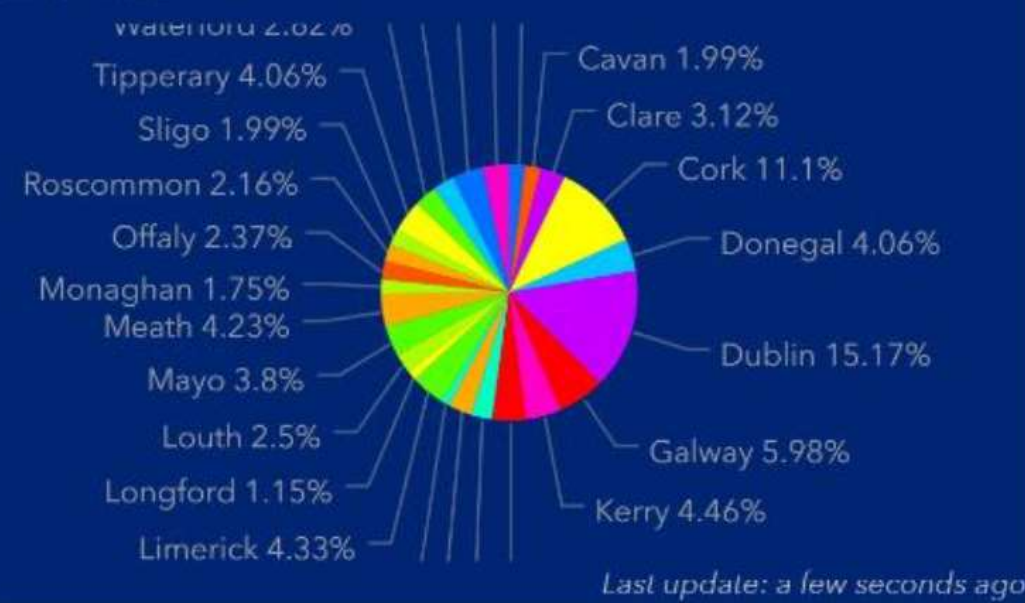
Last update: 4 minutes ago

Sports Facility Funding Analysis

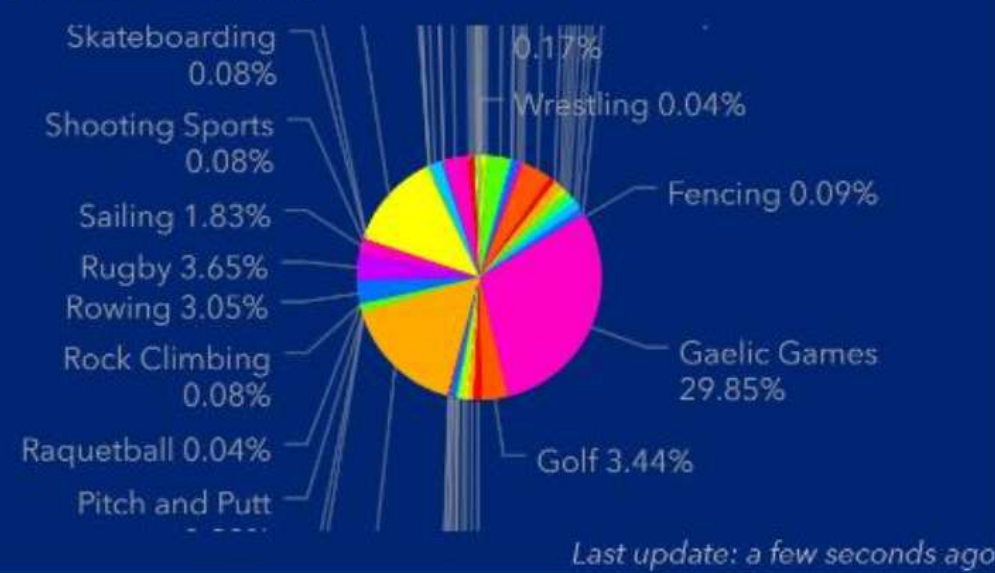


- All Ireland
- Carlow
- Cavan
- Clare
- Cork
- Donegal
- Dublin
- Galway
- Kerry
- Kildare
- Kilkenny
- Laois
- Leitrim
- Limerick
- Longford
- Louth
- Mayo
- Meath
- Monaghan
- Offaly
- Roscommon
- Sligo
- Tipperary
- Waterford
- Westmeath
- Wexford
- Wicklow

Grants allotted by County 2014-2018




Sports Capital Funding by Sport 2014-2018



Number of Successful Grants




Trails Inspection / Asset Management

Sport Ireland Trail Inspection

Trail: None Zoom: None

Eligible for Registration

Yes: 11 No: 17



Resolved Issues

4

Advisory Issues

26

Safety Issues


4

Significant Issues: Information

151

Infrastructure

54



Map data © OpenStreetMap contributors, Map layer by Esri

Map Key

Trailheads

- Primary Trailhead
- Secondary Trailhead

Trail Issues

- Fencing Issue
- Litter/Dumping Issue
- Road Issue
- Route Issue
- Signage Issue
- Structures Issue
- Surface Issue
- Vegetation Issue
- Waymarking Issue
- Other Issue

To Report Resolved Issues:

1. For Trail Issues, use the link in the map pop-up.
2. For Information Boards at Trailheads, use the link in the map pop-up.
3. For Websites, use the link in the Website tab on the right.

Trail Summary

Cromane Loop

Trail:

Trail ID: 6464

Trail Management: Trail Management

Trail Network: Kern

Length (km): 3.9

Grade: Moderate

Registration Summary

Overall Trail Score

Trail Information Score

Safety Issues: 0

Trail Infrastructure

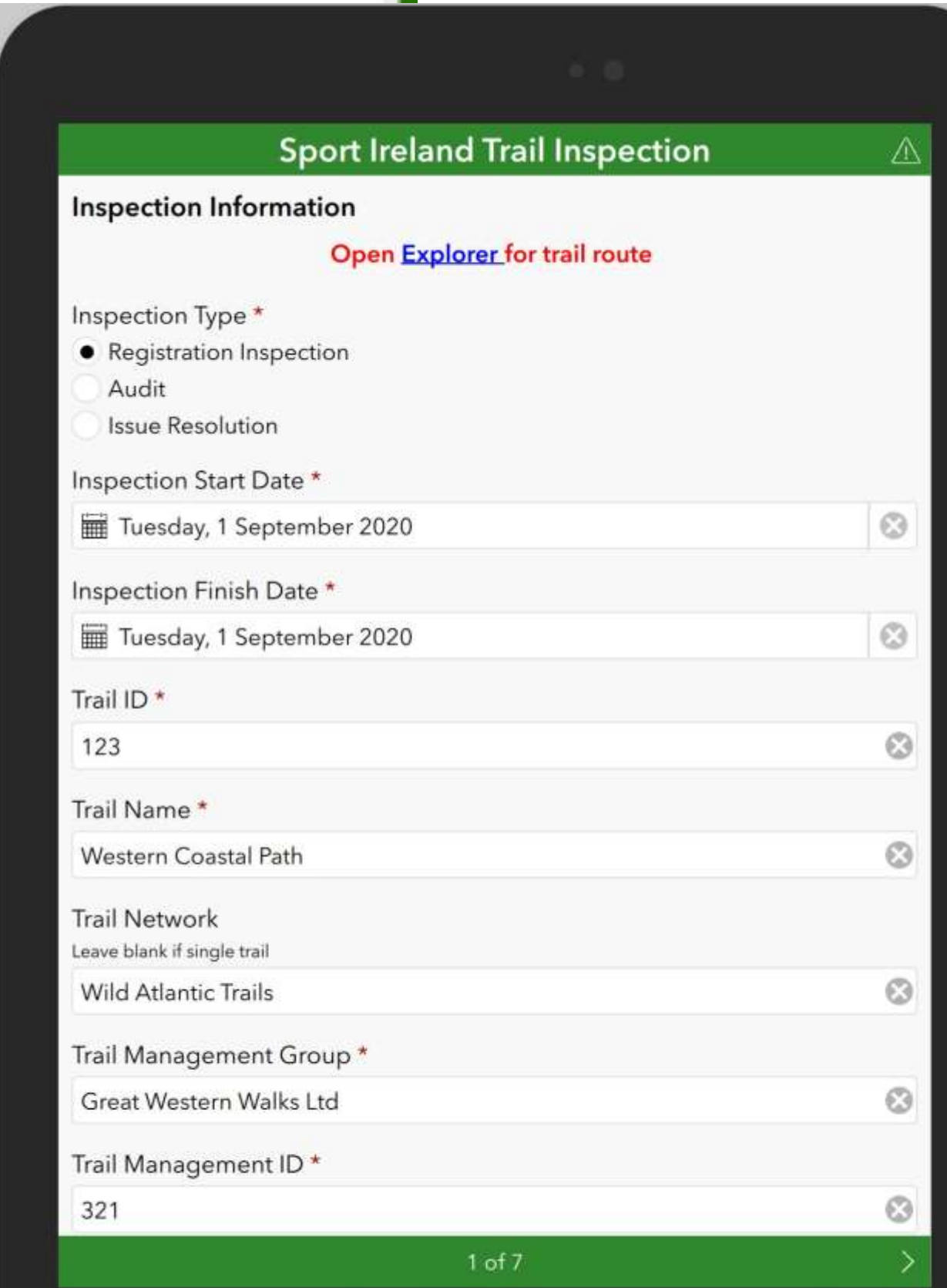
Management Results

Eligible for Registration

Last Inspection:

Last Inspection Completed

Inspector Accomplished

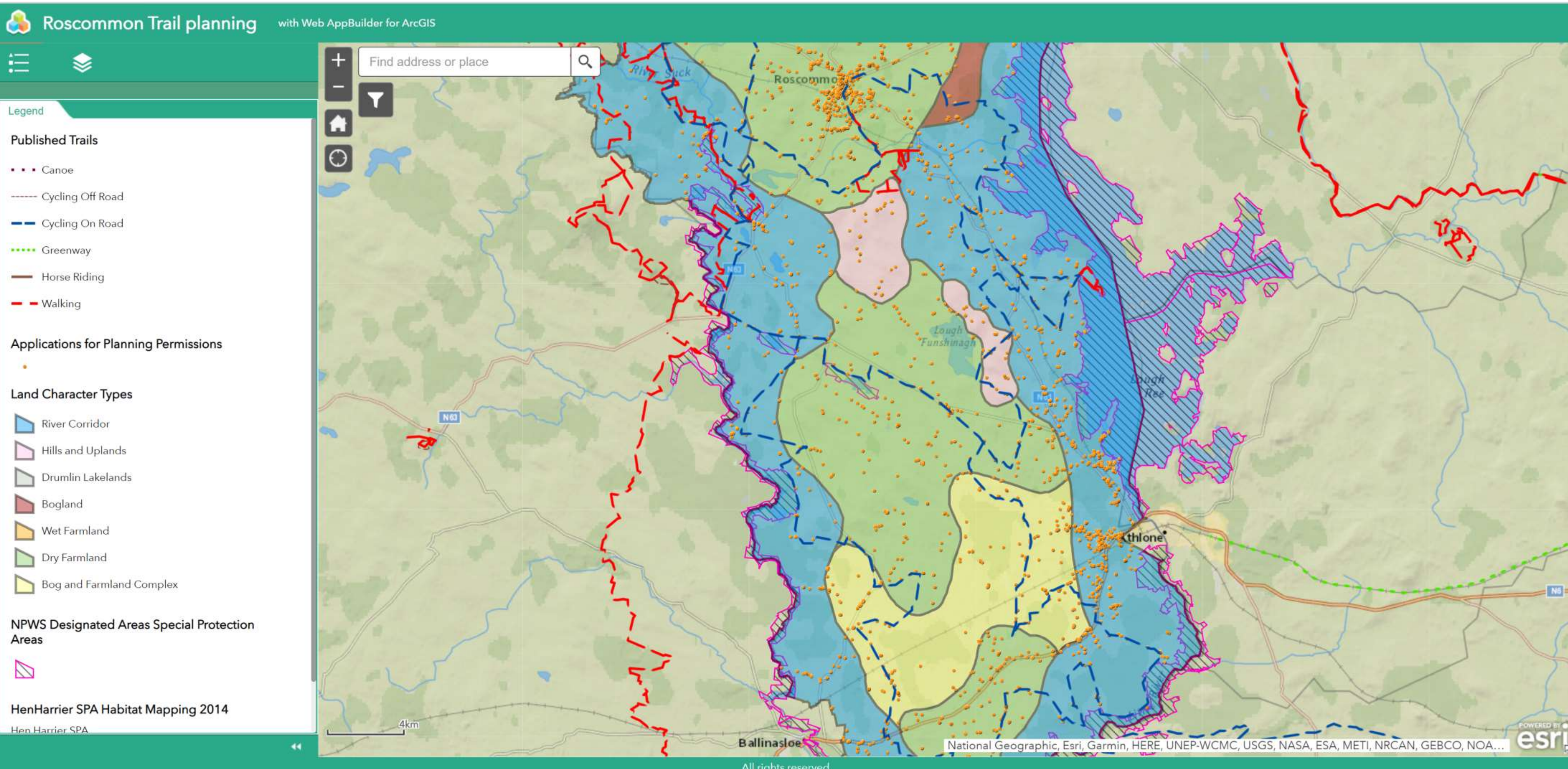


Infrastructure Issues

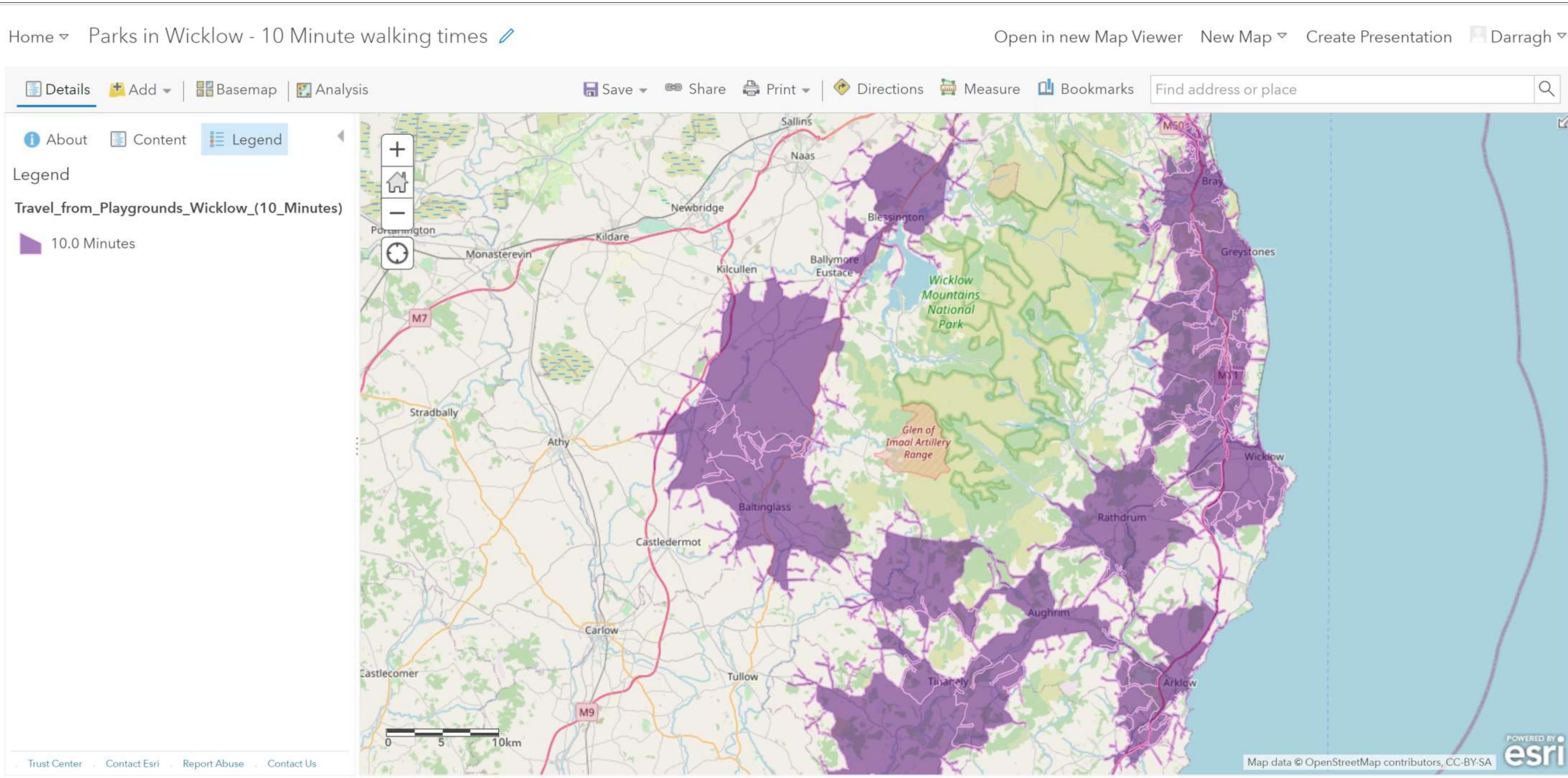


Issue Category	Safety	Significant	Advisory	Resolved	No Issues
Fencing Issue	1	6	0	0	0
Litter/Dumping Issue	0	3	4	1	0
None	0	0	7	0	0
Road Issue	0	1	1	1	0
Route Issue	0	5	2	0	0
Signage Issue	0	12	0	0	0
Structures Issue	1	5	6	1	0
Surface Issue	2	7	2	0	0
Vegetation Issue	0	3	7	0	0
Waymarking Issue	0	12	4	0	0

Recreation Amenity Planning



Gap / Needs / Planning Analysis



Social Prescribing / Covid-19 App

The screenshot displays the Sport Ireland Pilot Social Prescribing App interface. The top navigation bar includes the Sport Ireland logo, the app title, and the developer information. The main map area shows a geographic view of Dublin with various activity icons (e.g., running, cycling, yoga) and a yellow circular boundary. On the left, there is a search bar and a 'Near Me' panel with a list of filters and their counts. On the right, a 'Layer List' panel allows users to toggle different data layers.

SPORT IRELAND Sport Ireland Pilot Social Prescribing App Developed by Sport Ireland Trails Sport Ireland Trails

Find address or place

Near Me

Search for an address or locate on map

Terenure College

Show results within 5 Kilometers

Select filters to apply

Filter	Count
SportsAndRecreation_gdb - AllSportsClubsCoords	(60)
SDCC Leisure_Centres	(1)
SDCC Sports and Recreation centres	(1)
SDCC Health_and_Wellbeing	(2)
SDCC Sports and Youth Centres	(16)
SDCC Swimming_Pool	(3)
SDCC Playgrounds	(5)
Attractions Failte Ireland	(13)
Recreation - SportsFacilities	(10)
Recreation - SportsClubs	(9)

Layer List

Layers

- Summary
- SportsAndRecreation_gdb - AllSportsClubsCoords
- SportsAndRecreation_gdb - TrailsGeoHive
- Published_Trails
- Fingal Leisure Facilities
- Play Areas Fingal County Council
- Pitches Fingal County Council
- Parks Fingal County Council
- Beaches Fingal County Council
- SDCC Leisure_Centres
- SDCC Sports and Recreation centres
- SDCC Health_and_Wellbeing
- SDCC Sports and Youth Centres
- SDCC Swimming_Pool
- SDCC Playgrounds
- Attractions Failte Ireland

-6.163 53.312 Degrees

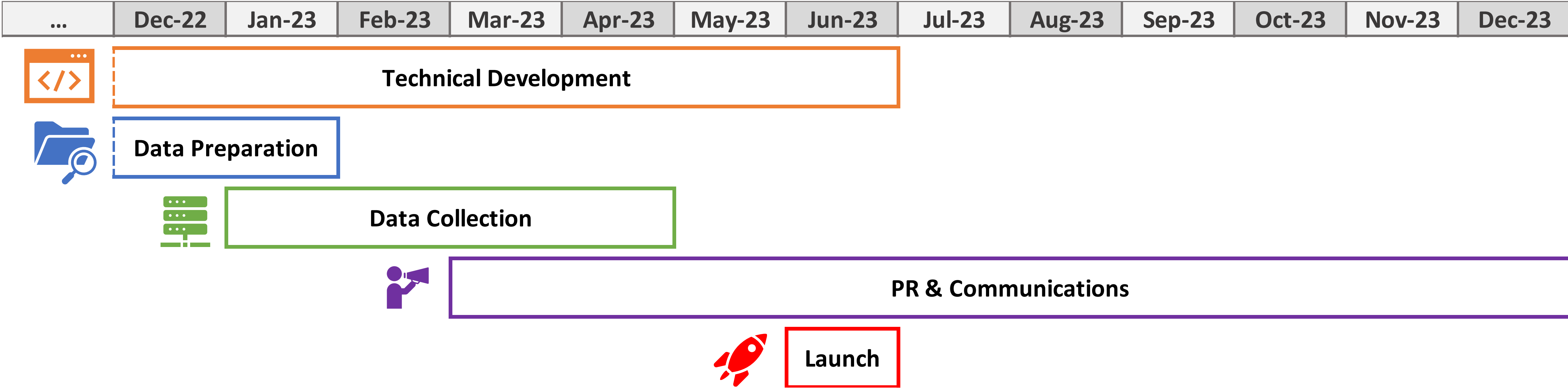
sportireland.ie

Implementation 2021-2023

Areas of Work

- Consultation
- Technical
- Data
- Market Research
- Branding
- PR & Communications
- Evaluation
- Data Protection
- Management Strategy

Current Timeline



Contact:

- Darragh O'Sullivan, Project Lead
- dosullivan@sportireland.ie

Thank You

